



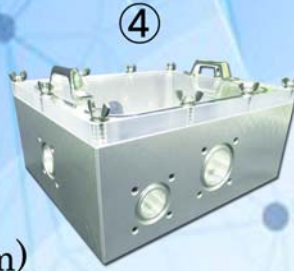
①



②



③



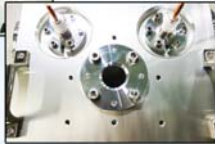
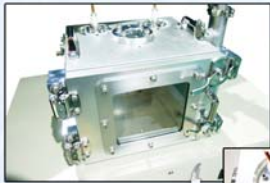
④



⑤

Small Vacuum Chamber (mm)

- ①74x236x287 (overall assy) ; SUS304
- ②73x140x328 (vacuum chamber) ; A5052
- ③122x160x224 (vacuum chamber) ; SUS304
- ④182x290x340 (vacuum chamber) ; A5052 with Acrylic lid
- ⑤Φ340x610 (vacuum hopper) ; SUS304



⑥



⑦



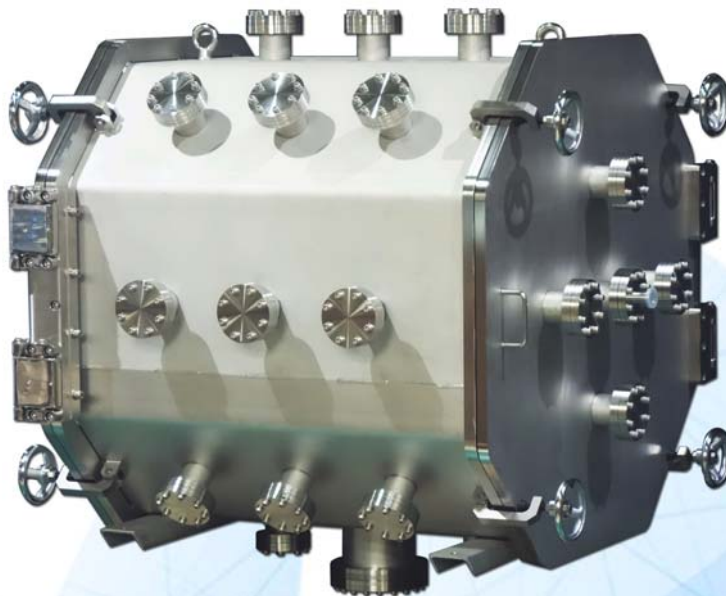
Customized Vacuum System (mm)

- ⑥500x800x1317 (overall assy) ;
260x296x340 (vacuum chamber) ; A5052
- ⑦872x1600x1626 (overall assy) ;
Φ560x338 (vacuum chamber) ; SUS304

Medium-High Vacuum Chamber (mm)

- ⑧926x1010x1010 (overall assy) ; SUS304
- ⑨704*1182*1583 (overall assy) ; SUS304

⑧



⑨

